



MALMO™

LUXURY VINYL FLOORING

malmoflooring.com

MALMO™

LUXURY VINYL FLOORING

Luxury vinyl flooring

The smart design of Malmo™ luxury vinyl flooring brings beauty and elegance as well as wear resistance and functionality to any space. Malmo™ vinyl flooring is hardwearing and durable, with an embossed surface creating the authentic look and feel of wood. It is resistant to indentations and will not chip or crack and is easy to maintain too.

The range offers wooden plank, herringbone and tile effects, with a colour palette that includes classic oak through to on-trend greys and travertine - all in a contemporary matt finish. This competitively priced collection offers a high performing flooring option that is suitable for a wide variety of high-end commercial and domestic applications. Quality is always guaranteed as Malmo™ comes with a warranty of up to 25 years for residential applications and 10 years for commercial applications.



Linus (see page 17)

Stickdown

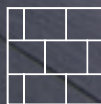
Stickdown is the most popular method of vinyl flooring installation amongst professionals and contractors, with R10 slip resistance across all three styles. It's ideal for commercial applications and new builds, and for use in conservatories and with encased water piped underfloor heating systems.

Rigid

Rigid vinyl flooring is easy to fit, so perfect for DIY installation. It has a 1mm underlay already attached to eliminate the cost and fuss of installing it separately - and its Välinge 5G click installation system makes fitting simple even in tight spaces, with push down end joints which are extra secure and stable.



Plank. The Plank range offers woodgrain colours to perfectly suit every environment - from warm and welcoming reception and living areas to cool and neutral shades. Selected colours offer a 2.0mm option.



Tile. All the beauty of traditional tiled flooring, without the cost and fussy installation. Our tile vinyl range offers a design to suit every taste, from traditional travertine to contemporary grey stone effects.



Herringbone. Our Herringbone collection offers classic styling with a smart modern twist. Its great looks are hardwearing, durable and easy to clean, too - whatever the environment.



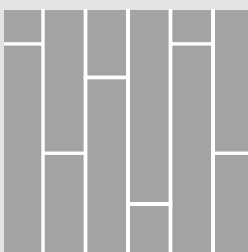
Stickdown

Professional installers and contractors choose Stickdown for vinyl flooring applications because it offers them all the features and functionality they're looking for in commercial buildings, high footfall areas and new build projects. It offers R10 slip resistance across three smart styles and is also suitable for conservatories and for use with encased water-piped underfloor heating systems.

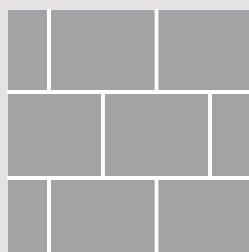
Three superb styles give you endless options and opportunities. Plank offers a beautiful and realistic wood effect in different plank sizes, Tile creates a stunning tile effect across a broad colour palette and Herringbone is an attractive modern twist on a traditional style. All come in 2.5mm thickness, with selected Plank designs also available in 2.0mm.

For details of adhesives see page 23.

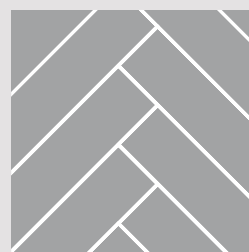
Available in 3 styles



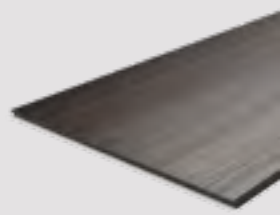
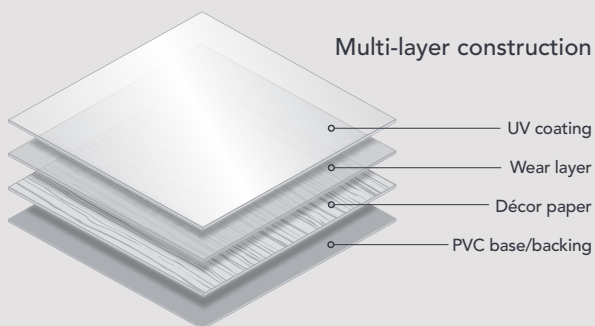
Plank



Tile



Herringbone



Waterproof core



Easy to cut



Hard wearing & durable



Easy to clean and maintain



DS/PTV/R10
Slip resistant



Suitable for use with underfloor heating (Encased water piped)



For use in conservatories



Bfl-s1
Reaction to fire tested



25 year domestic / 10 year commercial warranty

Bergen

NB. 2.0mm planks offer a 10 year domestic and 7 year commercial warranty





Plank (184mm x 1219mm x 2.5mm. Pack size: 3.37m² / 152mm x 1219mm x 2.0mm. Pack size: 3.34m²)

The Plank range offers woodgrain colours to perfectly suit every environment - from warm and welcoming to cool and neutral. Selected colours also offer a 2.0mm option.



Bergen
2.5mm MA50
2.0mm MA10



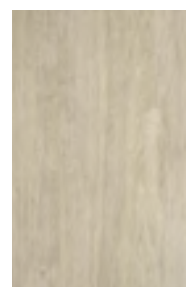
Varberg
2.5mm MA51
2.0mm MA11



Solna
2.5mm MA52
2.0mm MA12



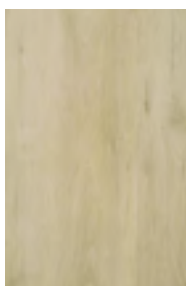
Narvik
2.5mm MA53
2.0mm MA13



Skara
2.5mm MA54
2.0mm MA14



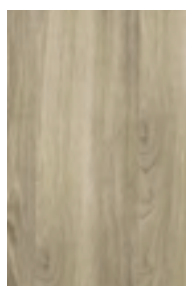
Kalmar
2.5mm MA55



Lund
2.5mm MA56



Alta
2.5mm MA57



Vantaa*
2.5mm MA58



Otta
2.5mm MA59

*Heavily embossed



Visby

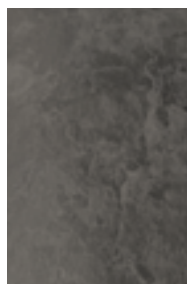


Jelling

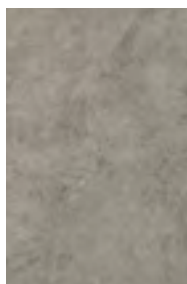


Tile (457mm x 305mm x 2.5mm. Pack size: 3.34m²) NEW

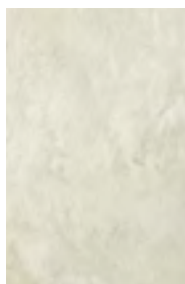
All the beauty of traditional tiled flooring, without the cost and fussy installation associated with grouting. Our tile designs come in a range to suit every taste, from traditional travertine to contemporary grey stone effects.



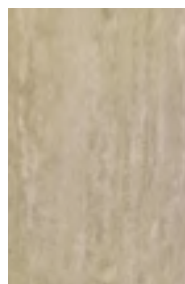
Visby
MA70



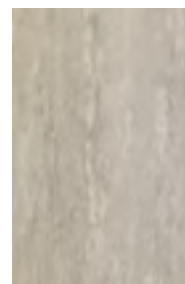
Marstad
MA71



Ski
MA72



Jelling
MA73



Drammen
MA74



Otta



Bergen

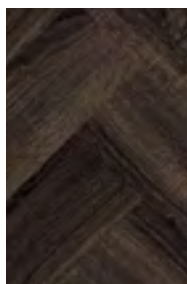


Vantaa

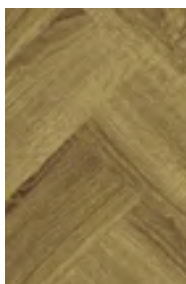


Herringbone (610mm x 100mm x 2.5mm. Pack size: 3.34m²) NEW

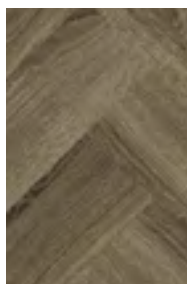
Our Herringbone range offers classic styling with a smart modern twist. Its great looks are hardwearing, durable and easy to clean.



Otta
MA80



Bergen
MA81



Vantaa
MA82

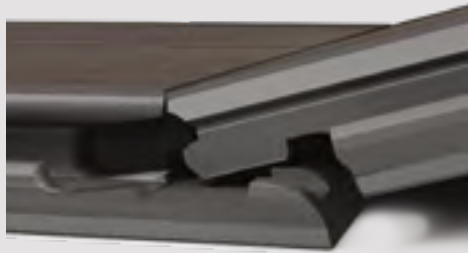
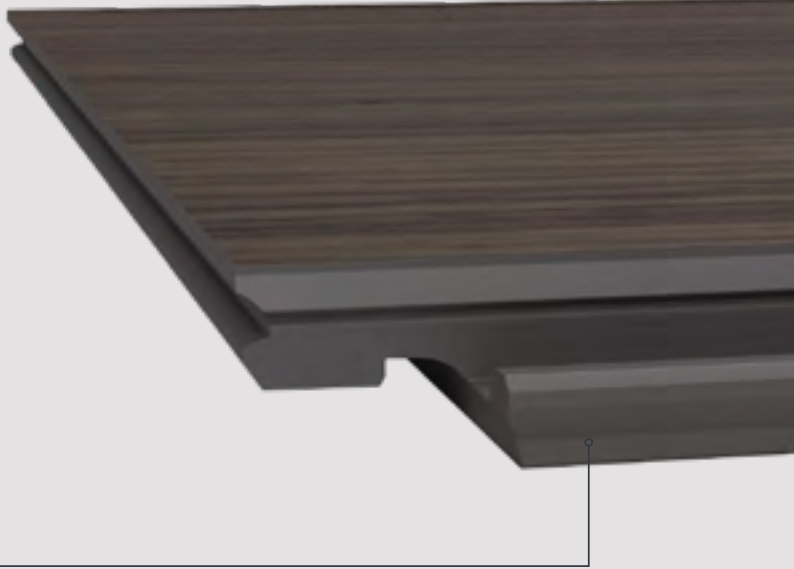


Marta

Rigid NEW

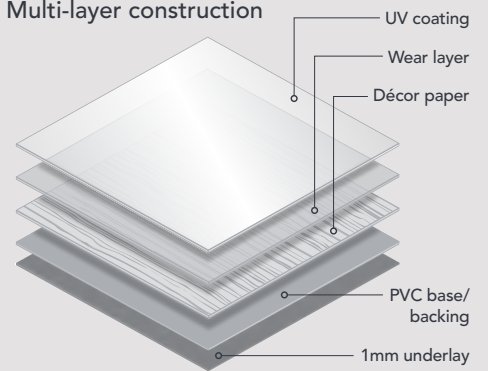
Easy fitting and smart styling combine with hardwearing performance and a whole host of clever features to make our Rigid vinyl flooring a real favourite with DIY fans, as well as commercial contractors. With three great looks to choose from, our Rigid ranges make stunning style easy to achieve.

Rigid flooring comes with a 1mm underlay built in, saving time and cost compared to having to buy and install it separately - plus click installation, the ultimate in convenience.

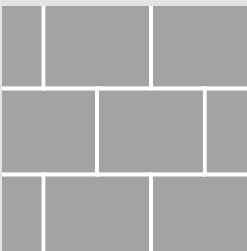


The advanced Välinge 5G installation system makes Rigid fast and simple to fit. Even if you're working in tricky or restricted spaces, you can easily achieve a perfect finish. Push down end joints need less positioning space, so there's no need to remove doors whilst fitting. 5G provides stronger and more stable end joints too.

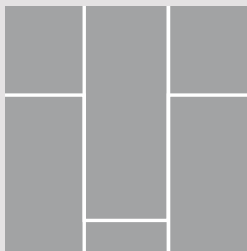
Multi-layer construction



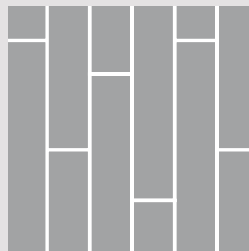
Available in 3 styles



Tile



Wide Plank



Narrow Plank



Waterproof core



Easy to cut



Hard wearing & durable



Foam backed



Slip resistant



Lighter to carry



Stable rigid PVC core

5G

5G end profile makes it easier to install



Suitable for use with underfloor heating (Encased water piped)



Reaction to fire tested



15 year domestic / 7 year commercial warranty



Greta



Livia



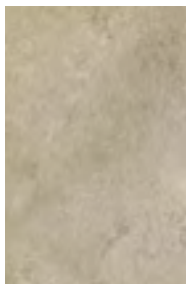
Tile (457mm x 300mm x 5.5mm. Pack size: 1.37m²)

NEW

Perfect for kitchens and bathrooms, the Tile range creates the look and feel of real tiling across a versatile choice of colours to suit classic or contemporary interiors.



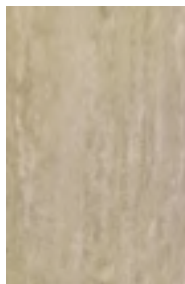
Livia
MA20



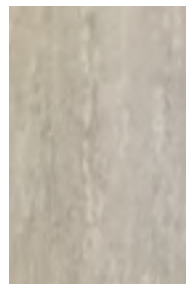
Greta
MA21



Marta
MA22



Tindra
MA23



Elina
MA24



Klara
MA25





Tuva



Matteo



Wide Plank (1500mm x 220mm x 5.5mm. Pack size: 1.98m²)



Extra width makes for extra style, with more surface space to show off the natural variations of real wood, like knots and grain.



Linus
MA30



Matteo
MA31



Tuva
MA32



Ebba
MA33



Dante

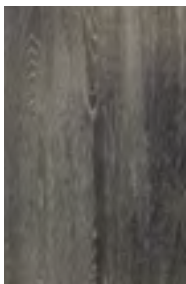


Axel



Narrow Plank (1220mm x 176mm x 5.5mm. Pack size: 1.71m²) NEW

Narrower planks cleverly create a sense of space in smaller areas - and they come in a range of smart shades, from light oak to darker hues.



Hugo
MA40



Axel
MA41



Ivar
MA42



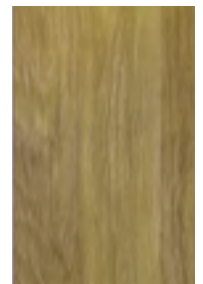
Dante
MA43



Arvid
MA44



Svante
MA45



Maja
MA46

Stickdown

A comprehensive choice of styles and colours, with all the great looks and durable qualities you're looking for to create smart and practical flooring for commercial applications, conservatories and high traffic areas.

Plank (184mm x 1219mm x 2.5mm. Pack size: 3.37m² / 152mm x 1219mm x 2.0mm. Pack size: 3.34m²)

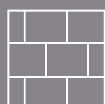


Plank

The authentic appearance of natural wood flooring, with varying plank lengths, subtle grains and a whole host of hues and colourways to choose from.



Bergen 2.5mm MA50 2.0mm MA10	Varberg 2.5mm MA51 2.0mm MA11	Solna 2.5mm MA52 2.0mm MA12	Narvik 2.5mm MA53 2.0mm MA13	Skara 2.5mm MA54 2.0mm MA14
---	--	--	---	--



Tile

Create a genuine tiling look quickly, easily and cost effectively with Stickdown vinyl in all the colours of classic or contemporary tiles.



Kalmar 2.5mm MA55	Lund 2.5mm MA56	Alta 2.5mm MA57	Vantaa* 2.5mm MA58	Otta 2.5mm MA59
-----------------------------	---------------------------	---------------------------	------------------------------	---------------------------

Tile (457mm x 305mm x 2.5mm. Pack size: 3.34m²) NEW



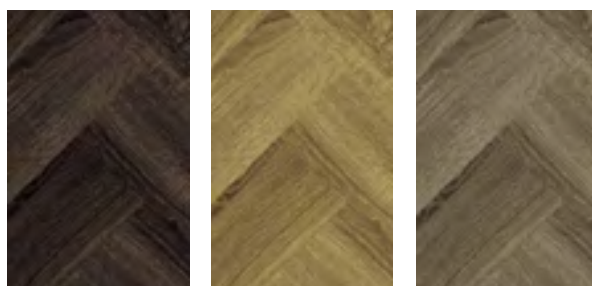
Herringbone

Make a fresh and fashionable style statement with smart looking, hard wearing herringbone pattern Stickdown vinyl.



Visby MA70	Marstad MA71	Ski MA72	Jelling MA73	Drammen MA74
----------------------	------------------------	--------------------	------------------------	------------------------

Herringbone (610mm x 100mm x 2.5mm. Pack size: 3.34m²) NEW



Otta MA80	Bergen MA81	Vantaa MA82
---------------------	-----------------------	-----------------------

Rigid

For quick and easy fitting and a great looking finish - with no advanced skills required – nothing beats our Rigid vinyl range. Ideal for every space around the home, from kitchens to bedrooms and bathrooms, and for commercial applications too.

Tile (457mm x 300mm x 5.5mm. Pack size: 1.37m²) NEW



Livia
MA20

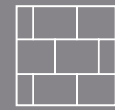
Greta
MA21

Marta
MA22

Tindra
MA23

Elina
MA24

Klara
MA25



Tile

Cool looking but comfortable under the foot - and incredibly easy and cost effective to fit, compared to traditional tiling. Enjoy all of the looks, with none of the fuss.

Wide Plank (1500mm x 220mm x 5.5mm. Pack size: 1.98m²) NEW

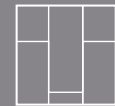


Linus
MA30

Matteo
MA31

Tuva
MA32

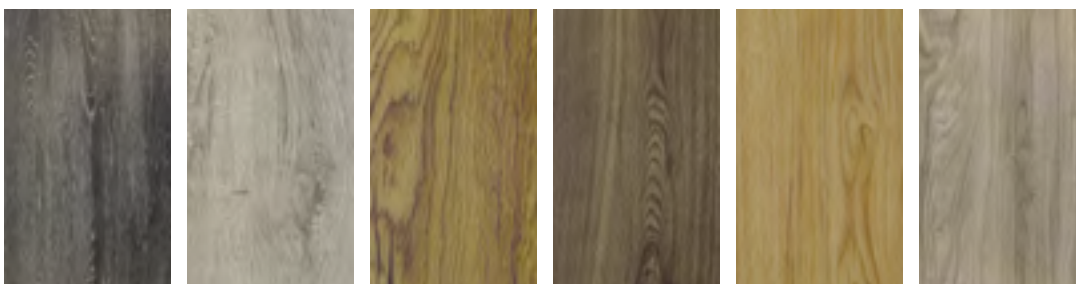
Ebba
MA33



Wide Plank

With more space to show off the lovely features and variants which occur naturally in real wood, our 220mm Wide Planks give any room a fabulous floor.

Narrow Plank (1220mm x 176mm x 5.5mm. Pack size: 1.71m²) NEW



Hugo
MA40

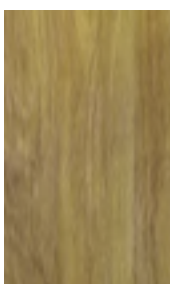
Axel
MA41

Ivar
MA42

Dante
MA43

Avid
MA44

Svante
MA45



Maja
MA46



Narrow Plank

Create the illusion of space in small or restricted areas with our Narrow Plank range, available in a broad choice of colours.

TECHNICAL GUIDE

	Stickdown Luxury Vinyl Flooring 2.5mm (0.55mm), 2.0mm (0.30mm)		Rigid Click Flooring 5.5mm (0.30mm)	
Subject	Main Parameter	Reference Standard	Main Parameter	Reference Standard
Formats	Regular Emboss (2.5mm/0.55mm, 2.0mm/0.30mm)		Plank woodgrain emboss & tile emboss	
Type of flooring	Heterogeneous PVC floor covering - Wood Plank, Tile and Herringbone formats.	ISO 10582	Loose laid semi rigid panels multilayer modular floorcovering with wear resistant top layer & click edge profiles	EN16511: 2014(E)
Wear / usage classification	23, 33, 42 - 2.5mm / 23, 31 - 2.0mm	ISO 10874	23, 31	ISO 10874
Installation method	Full bond Stickdown		Loose laid dry direct to subfloor with click profile	
Componet	PVC, plasticizer stabilizer CaCO ₃		PVC, Calcium Zinc Stabilizer, Calcium Carbonate	
Structure	Composite (Wear Layer: 0.55mm; Print film: 0.07mm; Back Layer: 1.88mm - 2.5mm) Composite (Wear Layer: 0.30mm; Print film: 0.07mm; Back Layer: 1.63mm - 2.0mm)		Composite (Wear Layer: 0.30mm; Print film: 0.07mm, Base layer 4.13mm, IXPE underlay 1.00mm)	
Size	Deviation <0.15% of nominal length up to 0.5mm maximum	ISO 24342	Deviation 0.15% of nominal length up to 0.5mm maximum	ISO 24337:2006
Squareness (mm)	<400mm deviation <0.25; <400mm, <0.35	ISO 24342	Deviation <0.20mm	ISO 24337:2006
Straightness (mm)	<400mm deviation <0.25; <400mm, <0.35	ISO 24342	Deviation <0.30mm	ISO 24337:2006
Overall thickness (mm)	Average: 2.5mm & 2.0mm: +0.13/-0.10mm, individual value: average +/-0.15mm	ISO 24346	5.5mm / 0.50mm	ISO 24337:2006
Wear layer thickness (mm)	0.55mm (2.5mm) / 0.30mm (2.0mm) +13%/-10%	ISO 24340	0.30mm +13% / -10%	ISO 24340
Surface treatment	PU coating		UV coating	
Profile & bevelled edges	Yes / Std / Eased		Vålinge 5G profile / Micro bevel 4 sides	
Colour fastness	Minimum 6	ISO 105-B02	Minimum 6	ISO 105-B02
Dimensional stability	<0.25%	ISO 23999	<0.25%	ISO 23999
Total mass per unit area	4.29kg/m ² (2.5mm) / 3.44kg/m ² (2.0mm) +13%/-10%	ISO 23997	1.98 g/cm ³ / IXPE backing :200 g/m ² +/- 10%	EN 430
Residual indentation (ave)	<0.10 mm	ISO 24343-1	<0.15 mm	ISO 24343-1
Reaction to fire	B _{fl} -s1	EN 13501-1	B _{fl} -s1	EN 13501-1
Chemical resistance	Class 0, excellent	EN 26987	Index 0	EN 423:2001
Resistance to staining	Index 0	EN 26987	Level 5 / no visible staining	EN 438-2:2005
Effects of a castor chair	25000 cycle no delamination	ISO 4918	25000 cycle no delamination	ISO 4918
Slip resistance	R10 / DS		DS	EN 13893 / CE EN14041
	PTV – Dry 70 (Ave) / Wet – 46 (Ave) Std woodgrain embossed	DIN 51130 / EN 13893	R10	DIN 51130:2014
	PTV – Dry 65 (Ave) / Wet – 49 (Ave) Heavy woodgrain embossed	BS 7976 - 2	PTV – Dry 64 / Wet – 42 (Woodgrain embossed)	
	PTV – Dry 56 (Ave) / Wet 44 (Ave) Tile Std embossed		PTV – Dry 65 / Wet – 44 (Tile std embossed)	BS 7976 – 2: 2002
Impact sound reduction Impact insulation class	2 dB (2.5mm) / 1 dB (2.0mm)	ISO 10140-3:2010+A1:2015	IIC - 26 ΔLW 18 dB	ASTM E989-12 ISO 10140-3:2010+A1 2015
Hardness	60° +/-5°	ISO 24343-1:2007	< 0.1mm ISO 24343:2007	
Residual indentation	<0.10mm	ISO 24343-1:2007	0.02mm	ISO 24343-1:2007
Abrasion resistance	Group T	EN660-2	Less than 0.015g/1000r	EN 660-1
Toxicity	Non toxic, does not contain any heavy metals or formaldehyde	EN71 -3	Non toxic, does not contain any heavy metals or formaldehyde	ROHS / REACH
Recycled material content	Nil		Nil	
Recyclable	Yes - Use local Recofloor recycling agent / www.recofloor.org		Yes - Use local Recofloor recycling agent / www.recofloor.org	
Features	PU coating, easy to clean		PU coating, easy to clean	
	Wood, Tile, & Herringbone effect designs		Plank wood effect & Tile design	
	High durability wear layer		High durability wear layer	
	EN standards & CE Compliant		EN standards & CE Compliant	
	Slip resistant and Reaction to Fire Tested		Slip Resistant and Reaction to Fire Tested	
Guarantee	2.5mm - Limited 25 Year Domestic use & 10 year Light – Moderate Commercial use 2.0mm - 10 Year Domestic use & 7 year Light – Moderate Commercial use		Limited 15 Year Domestic use & 7 year Light – Moderate Commercial use	
Usage areas	Domestic / Residential homes & light / heavy Commercial i.e - small / medium size shops & office areas *Not to be used for walk in wet rooms or external applications.		Domestic / Residential homes & light – Moderate- Commercial usage i.e - small / medium size shops & office areas.	
Underfloor heating use	Yes – Concrete encased water piped systems only. Max 27° C at floor level. Adhesive must be suitable for use over UFH systems		Yes – Concrete encased water piped systems only. Max 27° C at floor level.	
Conservatory / sun room use	Suitable		Not Guaranteed	

TECHNICAL OVERVIEW

	Stickdown		Rigid
Thickness	2.5mm	2.0mm	5.5mm
Wear Layer	0.55mm	0.30mm	0.30mm
Regular plank	✓	✓	
Narrow plank			✓
Wide plank			✓
Herringbone	✓		
Tile	✓		✓
Conservatories	✓	✓	
Underfloor heating	✓	✓	✓
Slip resistant	R10/BS PTV	R10/BS PTV	R10/BS PTV
Domestic warranty	25 year	10 year	15 year
Commercial warranty	10 year	7 year	7 year

MALMO™ ACCESSORIES



Levelling Compound
SCHAPLEV25



Primer
SCHVDPRIME10



Adhesive
SCHDURO14

Contact us for more information about our installation products:
info@malmoflooring.com

MALMO™
LUXURY VINYL FLOORING

T. 08457 298 298

malmoflooring.com

Whilst every care has been taken to ensure that the information included in this document was accurate at the time of printing, we reserve the right to change product specifications at any time without prior notice. The photographs reproduced in this publication are within the constraints of the printing process and are not to be used for matching purposes. All photographs are used for approximate representation only and may not show the actual products on offer. E&OE.